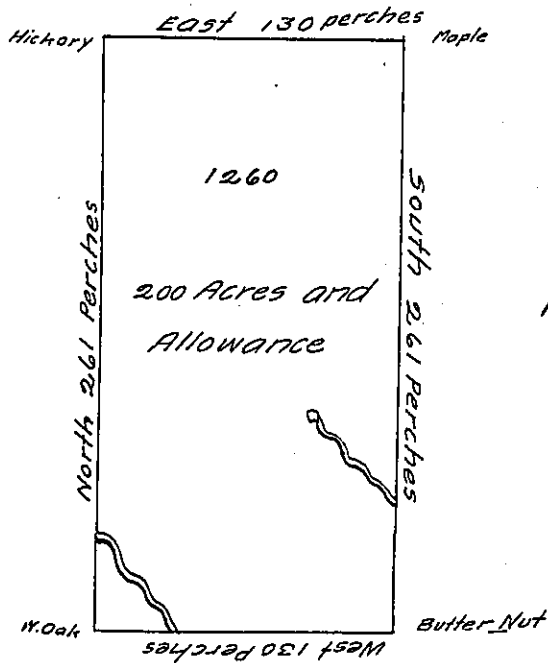


Donation Land, in District No. 6

Lot No. MCCLX

1231

121 of 250 Acres



1266

In Pursuance of an Act of General Assembly of the State of Pennsylvania, passed the twenty-fourth Day of February 1785 intitled, 'An Act for directing the Mode of distributing the Donation Lands promised to the Troops of this Commonwealth,' and by Order of the Surveyor General, with the Approbation of the Honourable the Executive-Council, I have Surveyed on the Twenty-seventh Day of November 1785, the above described Tract of Two Hundred Acres of Land, and Allowance of Six per Cent for Roads &c. No. 1260 Situate in District No. 6, on the West Side of the Allegheny River in the County of Westmoreland.

Ja. Chrystie Deputy

John Lukens Esq.

Surveyor

Surveyor General

IN TESTIMONY that the above is a copy of the original remaining on file in the Department of Internal Affairs of Pennsylvania, made conformably to an Act of Assembly approved the 16th day of February, 1833, I have hereunto set my Hand and caused the Seal of said Department to be affixed at Harrisburg, this seventeenth day of January 1905

*Loac P. Perry*  
Secretary of Internal Affairs.